

HOUSE & HOME

THE ADVICE ISSUE

20+

TOP DESIGNERS
OFFER AMAZING TIPS

3 BATHROOMS,
3 GREAT LOOKS
AND HOW TO
GET THEM

OLIVIA BOTRIE'S OWN
REAL-LIFE RENO

A POSH PENTHOUSE
HIGH IN THE SKY
OVER SASKATOON

MAAYAN KESSLER
AND JO LEVITAN
Page 38

Plus

Alison Roman's
Unbelievable
Lemon Shaker Pie!



Design CURTIS ELMY and TREVOR CIONA

Photography EYMERIC WIDLING

Text SIMONE OLIVERO

PARIS OF THE *Prairies*

Two designers turned their downtown Saskatoon penthouse into a high-fashion escape.



Produced by Stacy Begg/Floor plan illustration by Nikki D'Alessandro

INSIDER ADVICE:
Drop the ceiling to add overhead lighting and create a more intimate feel



LEFT: Some of the best views of Saskatoon can be seen while sitting around the dining table. **Chandelier** by Martyn Lawrence Bullard, Corbett Lighting; **dining chairs**, Villa & House; **art** (on easel) by Penny Leach.

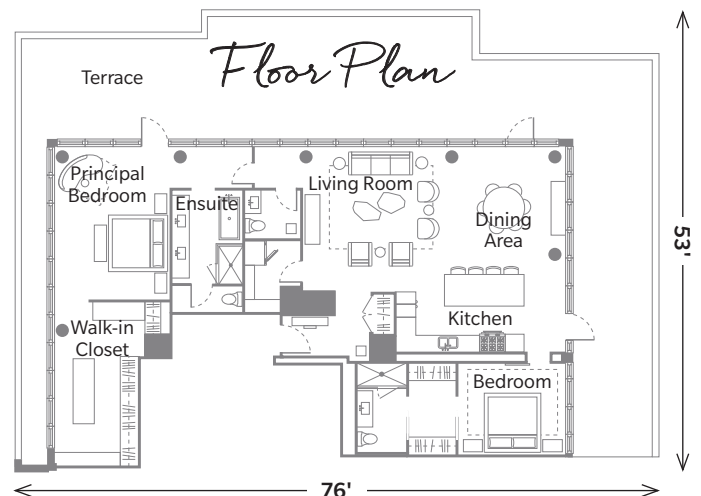
OPPOSITE: The wraparound terrace is an entertainer's paradise with heaters, a custom fire table and views for days. **Custom fire table**, Atmosphere Interior Design; **wireless table lamps**, Kuzco Lighting.



Designers and homeowners Curtis Elmy (left) and Trevor Ciona.

SASKATCHEWAN NATIVES and designers Curtis Elmy and Trevor Ciona couldn't believe their luck when they nabbed a penthouse at coveted No. 1 River Landing in downtown Saskatoon — the condo development completely sold out the first weekend of sales. "We always dreamed of living in a high-rise," says Curtis, "but Saskatoon is such a small city." Situated along the bank of the South Saskatchewan River with views of the intricate bridge system that lends Saskatoon the moniker "Paris of the Prairies," the residential tower is part of the River Landing development that has helped inject new life and energy into the riverfront.

In 2016, after purchasing during preconstruction, the two principal designers of Atmosphere Interior Design spent the next three years working with the developers' construction team to customize their dream home.



“IT’S SO POWERFUL TO SEE HOW THE CITY CHANGES THROUGHOUT THE DAY AND THE SEASONS. IT’S ALMOST LIKE LIVING ART” — Trevor Ciona



WHY THEY CHOSE IT

THE LOCATION: “This part of downtown has really come alive over the past few years,” says Curtis. “There are festivals and lots of families going for walks along the riverfront.”

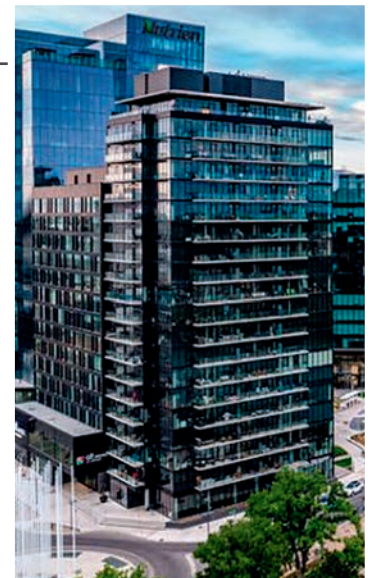
THE VIEWS: “We can see all of Saskatoon from our suite, including downtown and the river,” says Trevor. “And we have a west exposure that lets us enjoy the sunset.”

THE TERRACE: “We did a custom fire table, and with the heaters and overhang, we’re really protected from the elements,” says Trevor.

THE FLEXIBILITY: “Not only were we able to bring in our own trades and custom finishes, but the developers also let us completely customize the layout of our unit,” says Curtis.



INSIDER ADVICE:
Request images of
your stone slabs so you
can preplan the cuts
and placement



**NO. 1 RIVER
LANDING
490 2ND AVE
SOUTH,
SASKATOON**

DEVELOPERS:
Urban Capital and
Victory Majors

OCCUPANCY DATE:
2019, fully occupied

**NUMBER OF
FLOORS/UNITS:**
20 storeys,
124 residential units

AVERAGE PRICE:
Approx. \$635/sq.ft.

AMENITIES:
Gym, executive
concierge, residents'
lounge-party room
with kitchen

CONDO SIZES:
Approx.
476–2,284 sq.ft.

MAINTENANCE FEES:
Approx. \$0.45/sq.ft.

**ADDITIONAL
STORAGE SPACE:**
45 spaces were available
for purchase

PARKING SPOTS:
135 residential spots were
available for purchase,
50 public parking spots

“We didn’t want to go through the process of picking from the builder’s finishes only to turn around and renovate, so we negotiated to use our own trades and finishes,” says Trevor. “It felt like a once-in-a-lifetime opportunity,” says Curtis. Challenges did come up: “We had to redesign the cabinets a bunch of times and create different diagrams to make sure we could fit slabs, counters and even the furniture in the elevator,” he adds.

In 2019, they moved in to the sprawling 1,900-square-foot, open-concept space accented with blond herringbone floors throughout and punches of metal and black. The 11-foot-high exposed concrete ceilings were dropped by 12 inches to allow the designers to mask ductwork, and run recessed lighting and speakers. “High ceilings are really dramatic and grand, but lowering the ceiling by one foot gave the space a much cosier feel,” says Curtis.

**ABOVE AND OPPOSITE,
BOTTOM RIGHT:** “We always start the design in the kitchen because it tends to set the tone,” says Trevor. Images of the Calacatta Capri marble were added to the rendering for a realistic representation.

Pendants by Martyn Lawrence Bullard, Corbett Lighting; **stools**, Artistic Frame; **appliances**, Miele. **OPPOSITE, TOP:** Low profile furniture was chosen to allow for unobstructed views. **Sconces**, Kelly Wearstler; **TV**, Samsung; **sofa design**, Atmosphere Interior Design.



**INSIDER
ADVICE:**
Check dimensions
when designing
custom millwork to
ensure it will fit in
the elevator!



With walls of windows everywhere, Curtis and Trevor enjoy the views from almost every room. “It’s so powerful to see how the city changes throughout the day and the seasons,” says Trevor. “It’s almost like living art.” But it’s the 1,300-square-foot terrace that’s truly unique to the condo. “Outdoor condo space like this just doesn’t exist in Saskatoon,” says Curtis. “We have so much privacy up here. At night, we sit around the fire with music and nobody can hear us. It’s like an oasis in the middle of the city.” **H&H**

TOP: “I loved my old tub so much that I had to order the same one for this condo,” says Curtis. The designers created extra space in the floor plan to accommodate the large vanity. **Counter**, Pristine Countertops; **custom vanity**, Rēdl Kitchens; **tub**, Wetstyle.

LEFT: “We’ve always liked the idea of shopping our closet and spared no expense on making this our dream space,” says Curtis of the dressing room. **Custom cabinets**, Rēdl Kitchens; **hardware**, Myoh.

OPPOSITE, TOP RIGHT: “We initially selected a different wallpaper for the principal bedroom, but a last-minute switch led to this beautiful graphic by Kelly Wearstler,” says Trevor. “It worked out even better than we intended.” **Ceiling fixture** by Aerin Lauder, Visual Comfort; **chaise design**, Atmosphere Interior Design; **nightstand**, **bench**, Mr. Brown London.



TOP LEFT: Fluted drawers and brass accents are the finishing touches in this elegant powder room. **Wallpaper**, Phillip Jeffries; **sconce**, **mirror**, Arteriors; **painting** by Penny Leach.

BOTTOM RIGHT: The soft tones from the guest bedroom are carried into the ensuite bath. **Wallpaper**, Thibaut; **sconces**, Kelly Wearstler; **tile**, Julian Tile.

BOTTOM CENTRE: In the foyer, grey wallpaper wraps onto the ceiling and adds a textured backdrop for bold art. **Wallpaper**, Phillip Jeffries; **art light**, Visual Comfort; **stool**, Worlds Away; **art**, Wendover Art.

BOTTOM LEFT: The cosy guest bedroom has a softer palette than the rest of the condo. **Wallpaper**, Phillip Jeffries; **table lamp** by Thomas O'Brien, Visual Comfort; **nightstand**, Currey & Company; **art** (above bed), Wendover Art.

