

HOUSE & HOME

FRESH AIR STYLE

DECORATING FOR SPRING!

VANESSA FONG
AND GEORGE COITO
MAKE MAGIC

FLORIDA CHARM
AT THE
LOXAHATCHEE
CLUB

AT HOME WITH MARTA
AND GEORGE COITO
Page 42

Plus
LEARN TO
COOK INDIAN



A NEW POINT OF VIEW

A warm and sophisticated design for a waterfront penthouse in Burlington, Ont.

The penthouse has beautiful vistas of Lake Ontario and the Skyway bridge.

Design KAREN SHEARIM, ASHLEY SLEIMAN
and SHANNON THOMPSON

Photography ALEX LUKEY | *Text* SIMONE OLIVERO

Designers Ashley Sleiman (left) and Karen Shearim in the entry. Art (on panelled wall), Denison Gallery.



S

SET AGAINST THE SPARKLING BACKDROP of Lake Ontario, it's easy to forget you're a quick seven-minute walk from Burlington's main drag. Bridgewater Residences on the Lake is an impressive, new two-tower project perched east of Spencer Smith Park, with direct access to Brant Street Pier and the Great Lakes Waterfront Trail, a walking and cycling paradise. Attached to The Pearle Hotel & Spa, where you can enjoy lakeside dining, staycations and spa treatments, the spot attracts downsizers seeking luxury vacation vibes year-round. "We've always loved this part of Burlington," says Lino Losani, who purchased this penthouse, preconstruction, in 2016 with his wife, Denise. "It's close to family and has the perfect combination of magnificent views and a vibrant, walkable location."

Having worked on Lino and Denise's Ancaster, Ont., home more than a decade earlier, Karen Shearim, partner and lead designer at Barnard & Speziale Design was the obvious choice to personalize the couple's well-appointed, 3,200-square-foot penthouse. "I've had a long working history with the design firm," says Lino, who is the president of Losani Homes, an upscale custom builder. "Karen knew us and knew what we were looking for."



BRIDGEWATER RESIDENCES ON THE LAKE
2060
LAKESHORE RD.,
BURLINGTON,
ONT.

DEVELOPER:
New Horizon
Development Group

OCCUPANCY DATE:
2020, and sold out!

NUMBER OF FLOORS/UNITS:
Two towers
(22 and 7 storeys),
151 units

AVERAGE PRICE:
\$1,300–1,500/sq.ft.

CONDO SIZES:
Approx.
500–3,200 sq.ft.

MAINTENANCE FEES:
Approx. \$1/sq.ft.

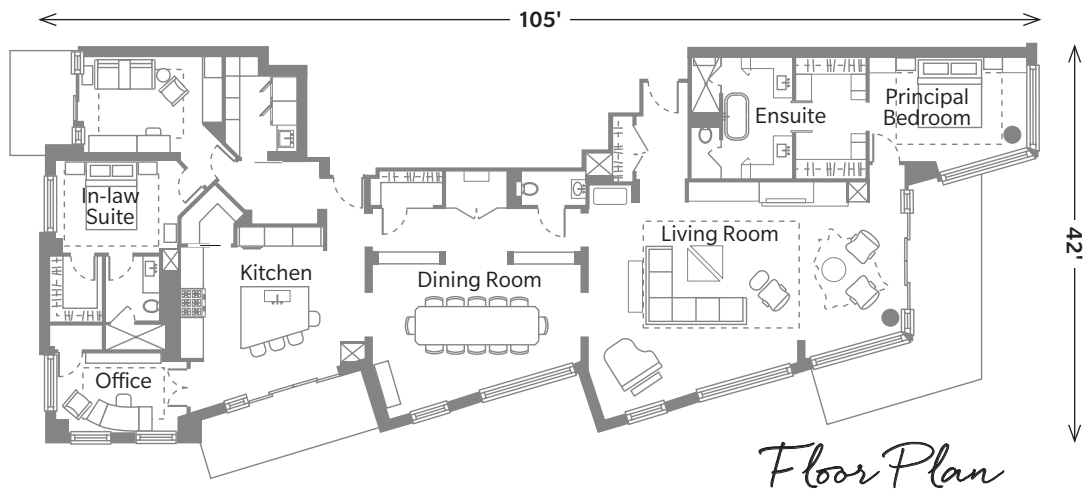
AMENITIES:
Outdoor lake-facing
terraces, access
to The Pearle Hotel
& Spa, including gym
and pool

ADDITIONAL STORAGE SPACE:
One per unit

PARKING:
Minimum one spot
per unit



ABOVE: Bold art and a graphic rug pop in the otherwise neutral living room. Custom sectional, Whittington & Co.; coffee table, Hickory White; side table, Woodbridge Furniture; art (above piano) by Craig Alan, yellow artworks (above sectional) by Martin Quen, Denison Gallery. **OPPOSITE:** “When we entertain, we usually all end up in the kitchen,” says Lino. Linear ceiling fixtures, Visual Comfort; counters, Busche Granite; stools, Hickory Chair.



The couple wanted a bold look that was completely different from their former home. “Lino’s house had a very Tuscan feel,” says Karen. “He wanted something fresh and contemporary for the condo that would match their new lifestyle.” The design brief was simple: the team would create a space that felt modern and sophisticated, but still warm and inviting.

The two-bedroom, two-and-a-half-bath unit took three years to complete and has floor-to-ceiling windows, three balconies, guest quarters and two entrances. To keep the look clean, Karen tiled the main living space in a glossy white porcelain, then added flourishes with pops of gold, ochre, walnut and Sahara Noir marble. To reflect the couple’s love of music, a baby grand piano and Lino’s extensive guitar collection — including one previously owned by Carlos Santana — are displayed like art.

While Losani Homes’ existing relationship with the developer gave Lino and Denise an edge during the planning stages (they were allowed some exclusive access to the building during construction), the design work



WHY THEY CHOSE IT

THE VIEWS: “This is easily one of the best views in the city with Lake Ontario, and the park, pier and Skyway bridge,” says Lino. “It’s breathtaking; spectacular day and night.”

THE KITCHEN: “My wife adores the kitchen. She loves to bake, so the extra ovens and counterspace are perfect for her.”

THE IN-LAW SUITE: “The spare bedroom means a lot to us because we designed it based on my parents’ taste and potential future needs,” says Lino.

THE DETAILS: “I’m a craftsman, so the workmanship was of utmost importance. The closet in the foyer has a 60–40 split starburst door with halfmoon pulls. It’s an art piece all on its own.”

“IT HAS THE PERFECT COMBINATION OF MAGNIFICENT VIEWS AND A VIBRANT, WALKABLE LOCATION” — *Lino Losani, homeowner*



ABOVE LEFT: The walnut ceiling detail provides visual interest and helps with acoustics. **Chandelier**, Gabriel Scott; custom **dining table**, Barnard & Speziale Design; custom **dining chairs**, Jessica Charles; **art print** by NGO (on top of cabinet), Denison Gallery.

ABOVE RIGHT: “The wine room is like art for us, along with providing storage for wines from our travels,” says Lino of the feather mosaic tile installation. Custom **mosaic tile** by Artistic Tile, Empire Kitchen & Bath.

OPPOSITE: “I love the rich colours in the office,” says Karen. “The ochre against the walnut is such a warm combination.” **Desk lamp**, Arteriors; custom **desk**, Barnard & Speziale Design.





LEFT: The tub is the centerpiece of the luxurious ensuite. **Pendant**, John-Richard; **tub** by Victoria + Albert, PMF Plumbing Supplies; **art**, Denison Gallery.



“LINO WANTED SOMETHING FRESH AND CONTEMPORARY THAT WOULD MATCH THEIR NEW LIFESTYLE” — *Karen Shearim, lead designer*

wasn't without its challenges. “With any condo, you have to deal with concrete walls, plumbing that can't be moved, and heating and cooling systems that have big, utilitarian doors,” says Karen. “The key is to find creative ways to deal with them.” To mask a heating and cooling unit, Karen built a magnetic wall panel out of walnut that can be removed for maintenance but looks like an intentional part of the design. She also had an intricate walnut ceiling feature built over the dining table to help with acoustics and tie in the angular walls.

Lino and Denise have embraced downsizing and fallen in love with the new space. The closeness to the lake and being able to easily lock the door and go when they want to travel are great selling points. “The space is comfortable, bright and fun,” says Lino. “It incorporates our tastes and personalities, and the craftsmanship is pure artistry.” **H&H**

TOP RIGHT: “The powder room is small, so it gave us the opportunity to do something bold and dramatic,” says Karen. A faux finish on the walls was created using black paint and gold leaf. **Sconce**, Visual Comfort; custom **wall treatment**, Horrocks & Co.



TOP LEFT: The serene guest bedroom was designed with Lino's parents in mind.

Art (over bed), Wendover Art.

TOP CENTRE: A walnut door in the main entry makes a ho-hum closet look like a work of art.

TOP RIGHT: The secondary entry features closed cabinets for extra storage. *Framed art (reflected in mirror), Wendover Art.*

BOTTOM RIGHT: "The principal suite has a completely different feel from the rest of the space," says Karen. "The colour palette is more tonal, and there's lots of texture to make it feel sophisticated and comfortable."

Chandelier, Arteriors; pendant, Currey & Company; wallpaper, Primavera Interior Furnishings.

BOTTOM LEFT: Black cabinets and graphic mosaic wall tile give the laundry room a high-contrast look. *Tile, Cercan Tile.*

