

OCTOBER 2023

HOUSE & HOME

Decorating Goes **BOLD!**

ROOMS THAT
DRESS TO IMPRESS



NATALIE
TREDGETT:
A CANADIAN
IN LONDON



THE BESPOKE
KITCHEN:
3 DESIGNERS,
3 FABULOUS
SPACES

Plus

NEW RECIPES FROM **MICHAEL SMITH**
FOR YOUR THANKSGIVING FEAST

NOTHING but View

Design ALDA PEREIRA
Photography EMA PETER
Text SIMONE OLIVERO

Alda Pereira designs a modern, minimalist penthouse in Vancouver's West End.





LEFT: The sleek kitchen has Wolf and Sub-Zero appliances. **Stools, Audo Copenhagen.**
BELOW: Designer Alda Pereira.



**MIRABEL,
1365 DAVIE ST.,
VANCOUVER**

DEVELOPER:
Marcon

OCCUPANCY DATE:
2021

**NUMBER OF
FLOORS/UNITS:**
Two towers (17 and
18 storeys), 149 units

AVERAGE PRICE:
Approx. \$1,785/sq.ft.

AMENITIES:
Gym, terrace on
the fifth floor

CONDO SIZES:
Approx.
600–2,747 sq.ft.

MAINTENANCE FEES:
Approx. \$0.58/sq.ft.

**ADDITIONAL
STORAGE SPACE:**
One storage locker
per unit

PARKING SPOTS:
One to two parking
spaces per unit

PET POLICY:
Two domestic
pets permitted

VANCOUVER'S WEST END is a location that's coveted for a reason. Wedged between English Bay, downtown and Stanley Park, it's where the city meets the ocean. "This is a truly walkable area, steps to the seawall and Sunset Beach Park. It's why you choose to live in Vancouver," says one lucky resident of Marcon's newly built Mirabel condominium complex.

Mirabel's two glass towers are a rare addition to the mostly high-rise-free neighbourhood, with their panes of yellow and aqua glass nodding to the water and the sunset. Perched at the top of one tower and spanning half of the building's width is a spectacular penthouse suite. Marcon tapped designer Alda Pereira to upgrade and furnish the space. She'd been working with the developer since 2016, first designing Mirabel's suite interiors, lobbies and common areas, followed by the sales centre model suite. The penthouse would be her pièce de résistance.

The developer requested interiors that might suit a professional couple who travel and have a taste for sophisticated finishes. Alda immediately got to work on the design. Today, the 2,747-square-foot, three-bedroom, four-bath condo has a minimalist vibe, with elegant furniture in a neutral palette. High-style details throughout make it even more special. "We added custom millwork to the dining area and principal closet for more functionality," says Alda. In the ensuite, 12- by 24-inch honed marble tile completely wraps the room.

OPPOSITE: The inviting family room has sweeping urban vistas. "It's a great room to enjoy in the morning as the city wakes up," says Alda. **Floor lamp, Crate & Barrel; sectional, coffee table, RH; sheepskin ottoman, CB2; rug, Armadillo & Co.**

Produced by Stacy Begg/Exterior photography by Luke Potter/Portrait photography by Kyran Kanaveros/Floor plan illustration by Nikki D'Alessandro

“YOU HAVE THIS INCREDIBLE VISTA OF THE WATER, MOUNTAINS AND SUNSET FROM THE LIVING ROOM” —Alda Pereira, designer

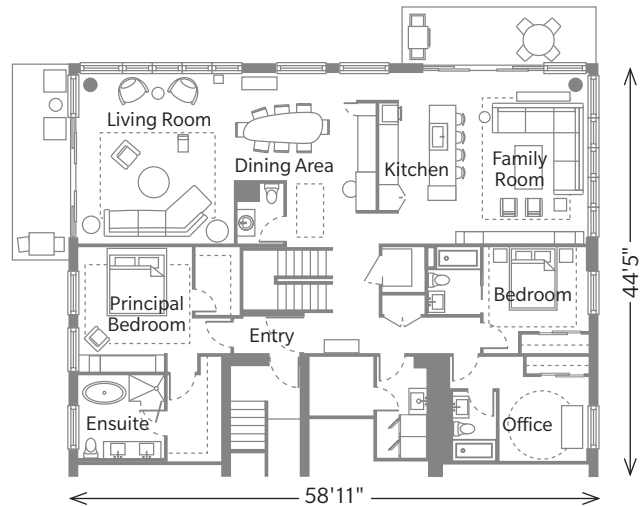
The condo layout was designed to maximize views. In the morning, the deck off the family room is perfect for breakfast as the sun rises. Later in the evening, the living room is the place to be to catch the sunset. “You have this incredible vista of the water, mountains and sunset from the living room,” says Alda. “It all feels very organic and intentional.”

Creating this breezy lifestyle, however, came with its challenges. The six-month-long project coincided with Covid shutdowns, which caused major delays. “Designers are experts in creating schedules, but so much was out of our control,” says Alda. “We had to deal with a bit of chaos that ensued.” This included longer lead times and problems with deliveries. “Even small things were challenging.”

A standout feature is the sensational rooftop terrace, which spans half of the building. Along with its two balconies, the penthouse offers an indoor-outdoor lifestyle that’s incredibly appealing. “The balcony off the living room is perfect for drinks with a view of the ocean,” says Alda. “It’s pretty fabulous.”

Life at Mirabel, as described by a current owner, looks a bit like this: Morning coffee on the balcony, a stroll to Stanley Park for an early pitch and putt, a snack on Denman as you head to work on foot, then a wander through the leafy streets on your way home to catch the sunset. Where do we sign up? **H&H**

The Floor Plan



The custom dining table is made of solid wood and has an organic shape. **Ceiling fixture**, Bocci; custom **dining table**, Lock & Mortice; **dining chairs**, Ton.



Entry photography by Jesse Laver

WHAT MAKES THIS BUILDING GREAT

THE VIEW: “In the summer, the ocean, sky and mountains are all blue, and you get this spectacular vista that’s rare to find in Vancouver — it feels precious,” says Alda.

THE LOCATION: “The West End is one of Vancouver’s oldest residential neighbourhoods, so Mirabel is amidst established homes, trees and low-rise brick buildings,” says Jesse Laver, Mirabel’s sales lead.

THE ROOFTOP: “The penthouse rooftop has areas you can set up for entertaining,” says Alda. “You can host an incredible party up there.”

THE EXTRAS: “A private garage with room for two cars, a motor bike or two, and an attached private storage room are all perks of the penthouse,” says Jesse.



The subdued palette is restful in the guest bedroom. **Bed frame, CB2**; **art** by Michael Batty, Gallery Jones.



TOP RIGHT: A wall of custom millwork in the family room has storage for the TV and shelves for displaying objets. **Custom millwork, Palomino Custom Millwork & Cabinetry.**

CENTRE RIGHT: The ensuite walls and floors are wrapped in a large-scale marble tile.

BOTTOM RIGHT: A glass staircase in the entry leads to the rooftop terrace, allowing light to filter in. **Bench (background), Gubi**; **art** by Vera Midões, Galeria Bessa Pereira.

BOTTOM LEFT: “I chose vibrant art to brighten up the living room after sunset,” says Alda of the triptych over the sofa. **Sofa, Living Divani**; **coffee table, Gubi**; **art** by Michael Batty, Gallery Jones.

CENTRE LEFT: Custom millwork continues from the principal bedroom to the dressing area. “The space has a very customized feel that you rarely get with a newly built condo,” says Alda. **Millwork, Palomino Custom Millwork & Cabinetry.**

